

Stop lock with 4 indexing positions (4 x 90°)

SPECIFICATION

Types

- Type **A**: with flange for surface mounting
- Type **B**: with female thread
- Type **C**: with male thread

Latch

Zinc die casting, plastic coated black, RAL 9005, textured finish **SW**
red, RAL 3000, textured finish **RS**

Indexing mechanism

Type A

Zinc die casting / Plastic

Type B / Type C

Steel / Plastic

Steel parts zinc plated, blue passivated

Fastening flange, zinc die casting plastic coated, black, matt



INFORMATION

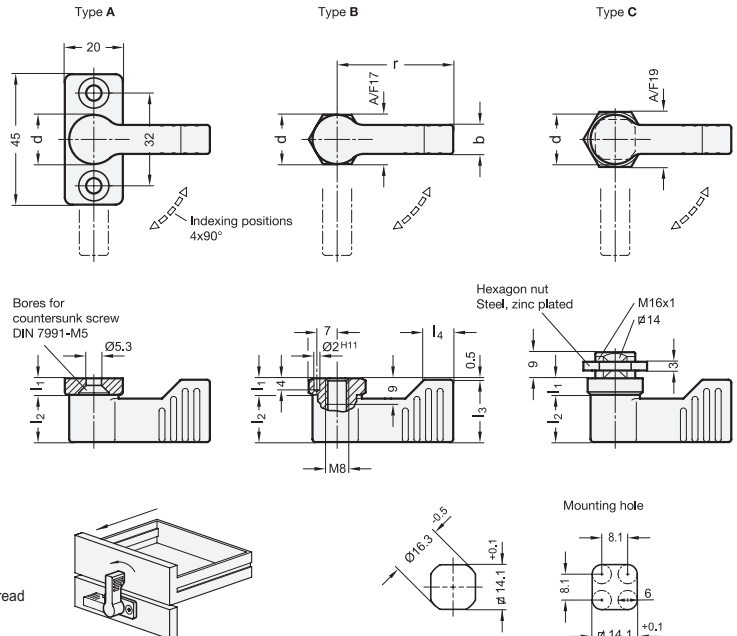
Stop locks GN 702 are particularly suitable for light-weight applications not exposed to dynamic loads, e.g. for keeping drawers closed.

To mount stop locks of Type C, bore holes as shown in the diagram below must be set in the attachment surface.

These mounting holes are usually made by punching or with laser.

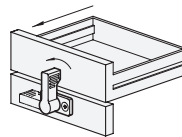
For small series and steel sheets below 2 mm thickness, the sheet metal punches GN 123 (see page 1493) are the tool of choice.

The mounting bore holes can also be made by drilling / milling.



* Complete with type index of the stop lock

- A** with flange for surface mounting **B** with female thread **C** with male thread



GN 702

Description	d	r	b	l1 ≈	l2	l3 min.	l4	⚖
GN 702-17-40-*-RS	17	40	10	5.5	16.5	21.5	11	72
GN 702-17-40-*-SW	17	40	10	5.5	16.5	21.5	11	73
GN 702-17-55-*-RS	17	55	10	5.5	16.5	21.5	11	80
GN 702-17-55-*-SW	17	55	10	5.5	16.5	21.5	11	80

Weight type A